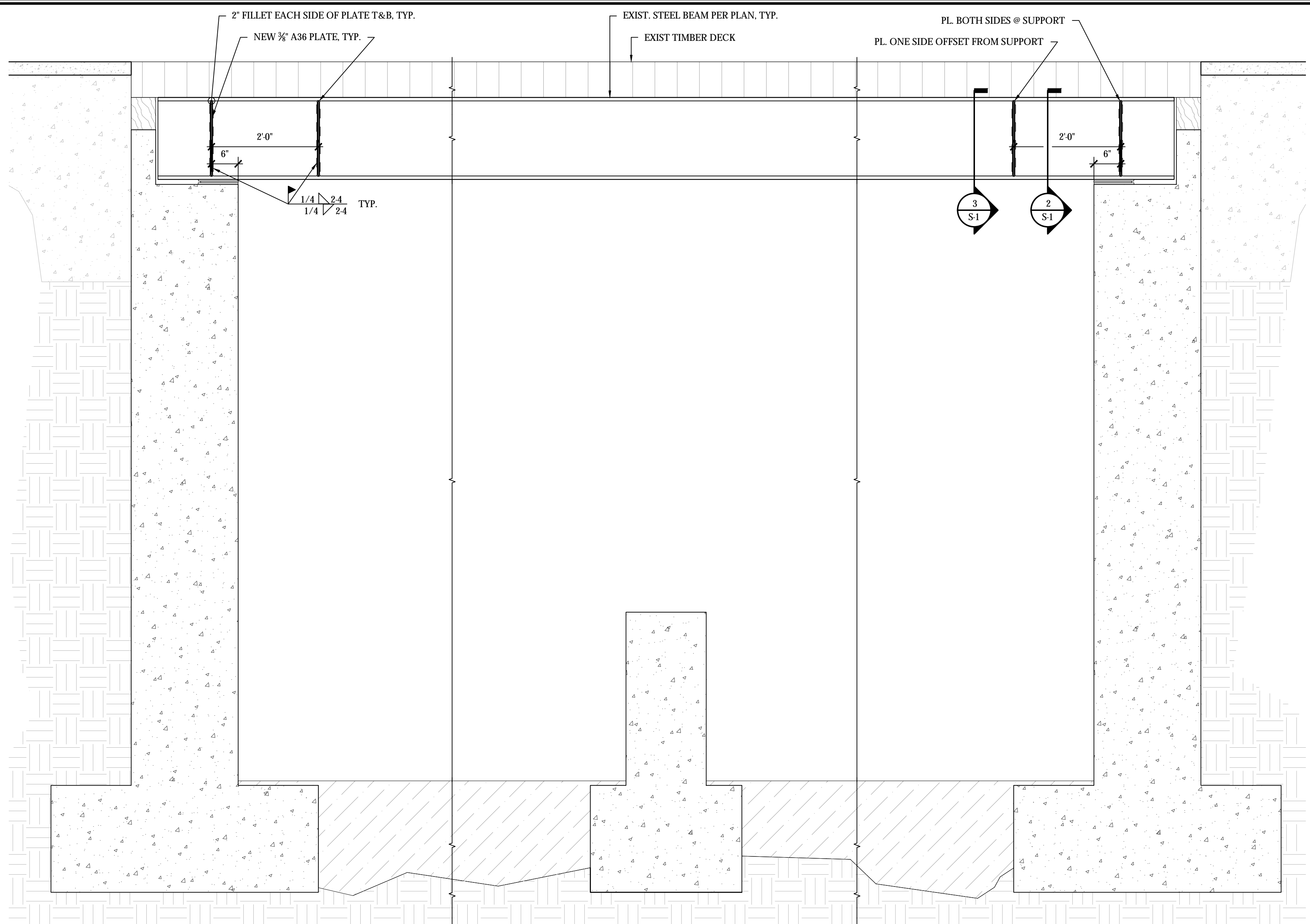
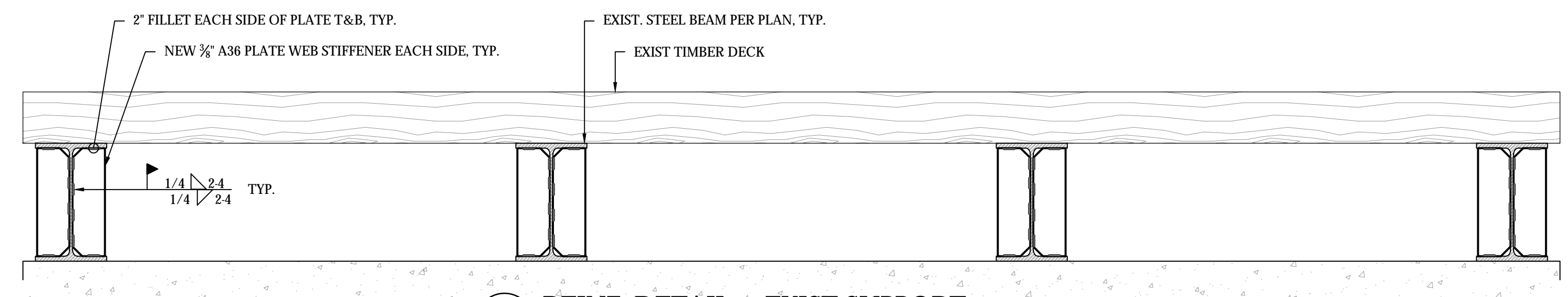


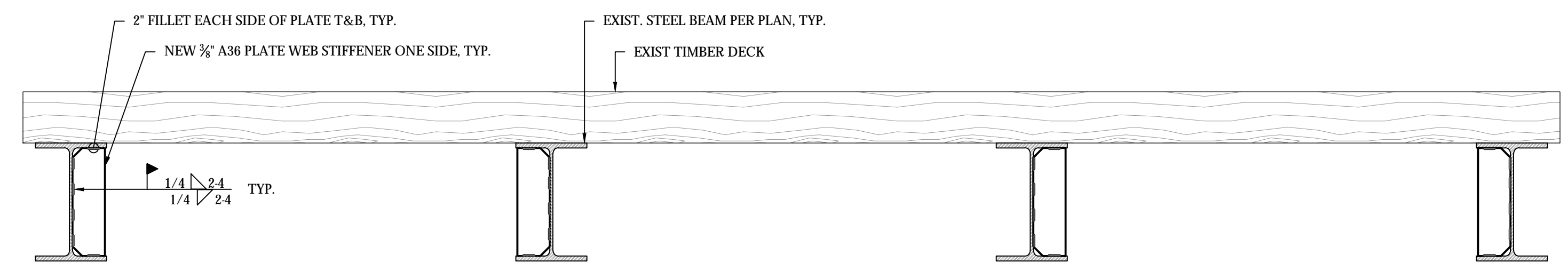
**EXIST. FRAMING LAYOUT**  
SCALE: 1/4" = 1'-0"



**SECTION DETAIL @ BEAM**  
SCALE: 3/4" = 1'-0"



**REINF. DETAIL @ EXIST SUPPORT**  
SCALE: 3/4" = 1'-0"



**REINF. DETAIL OFFSET FROM SUPPORT**  
SCALE: 3/4" = 1'-0"

**ABBREVIATIONS LEGEND**

- AISC = Am. Inst. of Steel Construction
- A.O.D. = AT OWNER'S DISCRETION
- CONC. = CONCRETE
- CONN. = CONNECT
- EA. = EACH
- EXIST. = EXISTING
- FTG. = FOOTING
- H.D.G. = HOT DIPPED GALVANIZED
- MAX. = MAXIMUM
- MECH. = MECHANICAL
- MIN. = MINIMUM
- O.C. = ON CENTER
- O.H. = OPPOSITE HAND
- ε = PL. = PLATE
- REINF. = REINFORCEMENT
- REQ. = REQUIRED
- SIM. = SIMILAR
- STD. = STANDARD
- STL. = STEEL
- STR. = STRUCTURAL
- T.B.D. = TO BE DEMOLISHED
- T.B.R. = TO BE REMOVED
- T.O.C. = TOP OF CONCRETE ELEV.
- T.O.ε = TOP OF PLATE ELEV.
- T.O.S. = TOP OF STEEL ELEV.
- TYP. = TYPICAL
- U.N.O. = U.O.N. = UNLESS NOTED OTHERWISE
- V.I.F. = VERIFY IN FIELD
- w/ = WITH

**GENERAL STRUCTURAL NOTES**

- G1. ALL WORK SHALL CONFORM TO THE REQUIREMENTS OF THE 2015 INTERNATIONAL BUILDING CODE, AS AMENDED FOR THE 2018 CONNECTICUT BUILDING CODE.
- G2. THE GENERAL CONTRACTOR SHALL BEAR SOLE RESPONSIBILITY FOR MEANS AND METHODS OF CONSTRUCTION AND SAFETY ON THE JOB SITE.
- G3. ALL DIMENSIONS SHOWN ON THE STRUCTURAL DRAWINGS ARE SHOWN FOR REFERENCE ONLY CONTRACTOR IS TO VERIFY ALL DIMENSIONS, ANGLES, ELEVATIONS, etc. PRIOR TO THE START OF CONSTRUCTION OR THE FABRICATION OF BUILDING COMPONENTS.
- G4. THE STRUCTURAL DRAWINGS SHALL BE USED IN CONJUNCTION WITH THE SPECIFICATIONS AND ANY OTHER RELEVANT DRAWINGS.

**STRUCTURAL STEEL**

- S1. MATERIALS:
  - STEEL PLATES CHANNELS, & ANGLES.....ASTM A572-50
  - WELDING ELECTRODES.....ASTM A233 E 70 SERIES
- S2. STRUCTURAL STEEL SHALL BE DETAILED, FABRICATED AND ERECTED IN ACCORDANCE WITH THE LATEST PROVISIONS OF THE 'SPECIFICATIONS FOR THE DESIGN, FABRICATION AND ERECTION OF STRUCTURAL STEEL FOR BUILDINGS' OF THE AMERICAN INSTITUTE OF STEEL CONSTRUCTION, 14TH EDITION AND THE 'AISC CODE OF STANDARD PRACTICE FOR STEEL BUILDINGS AND BRIDGES'.
- S3. ALL WELDING SHALL CONFORM TO THE REQUIREMENTS OF THE AMERICAN WELDING SOCIETY (AWS) STRUCTURAL WELDING CODE STEEL D1.1. LATEST EDITION, BY CERTIFIED WELDERS AND QUALIFIED WELDING PROCEDURES. SHIELDED METAL ARC METHOD OF WELDING SHALL BE USED FOR ALL WORK. WELDING ELECTRODES, WELDING PROCESS, MINIMUM PREHEAT AND INTERPASS TEMPERATURES SHALL BE IN ACCORDANCE WITH THE AISC AND AWS SPECIFICATIONS. ANY STRUCTURAL STEEL DAMAGED BY WELDING IS TO BE REPLACED OR REINFORCED AS ACCEPTABLE TO THE STRUCTURAL ENGINEER.
- S4. ALL PAINT SHALL BE REMOVED PRIOR TO WELDING/CUTTING PER LEAD PAINT ABATEMENT SPECIFICATIONS. ALL STEEL SHALL BE REPAINTED PER PAINT NOTES.
- S5. MINIMUM FILLET WELD SIZE SHALL BE 1/4" UNLESS OTHERWISE SHOWN ON THE DRAWINGS. RECORDS OF WELDER QUALIFICATIONS SHALL BE MAINTAINED AND AVAILABLE FOR OWNERS REVIEW.

**PAINTING**

- P0. THE STRUCTURE IS TO BE PAINTED PER THE FOLLOWING NOTES, IN THE PROCEDURAL SEQUENCE:
  - 1. CLEAN & PREP PER P1 (REQUIRED)
  - 2. COLD GALV. COMPOUND PER P2 (REQUIRED)
  - 3. PRIME PER P3 (STRONGLY RECOMMENDED)
  - 4. FINISH PER P4 (RECOMMENDED)
- P1. ONCE THE PLATE INSTALLATION IS COMPLETED, INCLUDING LOCAL LEAD ABATEMENT, THE EXISTING STEEL FRAMING MUST BE MECHANICALLY CLEANED, INCLUDING LEAD ABATEMENT, TO SSPC-SP11 MINIMUM, THEN FULLY CLEANED AND DEGREASED AS REQUIRED, AND ALLOWED TO FULLY DRY PRIOR TO PAINTING PER NOTE P2.
- P2. AS SOON AS PRACTICABLE, AFTER STEP P1 IS COMPLETED, ALL EXISTING STRUCTURAL STEEL MUST BE PAINTED WITH RUSTOLEUM 7000 SERIES COLD GALVANIZING COMPOUND OR AN EQUAL APPROVED IN WRITING. PAINTING IS TO FULLY CONFORM TO THE MANUFACTURER'S REQUIREMENTS.
- P3. ONCE COLD GALVANIZED PER STEP P2, IT IS STRONGLY RECOMMENDED THAT ALL EXISTING STRUCTURAL BE PRIMED WITH RUSTOLEUM PVDf PRIMER OR AN EQUAL APPROVED IN WRITING. PAINTING IS TO FULLY CONFORM TO THE MANUFACTURER'S REQUIREMENTS. IF SUBSTANTIAL TIME HAS PASSED SINCE THE COMPLETION OF COLD GALVANIZING, THIS WILL INCLUDE CLEANING THE SURFACES.
- P4. ONCE PRIMED PER STEP P3, IT IS RECOMMENDED THAT THE STRUCTURE BE PAINTED WITH RUSTOLEUM PEGARUST ENAMEL OR AN EQUAL APPROVED IN WRITING. PAINTING IS TO FULLY CONFORM TO THE MANUFACTURER'S REQUIREMENTS. IF SUBSTANTIAL TIME HAS PASSED SINCE THE COMPLETION OF PRIMING, THIS WILL INCLUDE PREPARING THE SURFACES.

REVISION	NUMBER	DATE

**BRIDGE #04424**  
MILLER GOODWIN CONNECTOR @ LITTLE RIVER  
CANTERBURY, CT  
**STRUCTURAL REPAIR PLAN**

**CLA Engineers, Inc.**  
CIVIL - STRUCTURAL - SURVEYING  
317 Main Street  
Norwich, Connecticut  
(860) 886-1966 Fax (860) 866-9165  
www.claengineers.com

CLA PROJECT NO.	6338
PROJ. ENGINEER	ADB
DATE:	2019.09.24
SHEET NO.	(OF 1 SHEETS)